

A Grade-II listed 1960s dancehall reimagined as a platform for emerging talent in Manchester. Mid-century architecture combines with state-of-art production for unforgettable live music, conferences and community events for up to 1,000 people.

NEW CENTURY

Mayes Street,
Manchester





Manchester’s iconic mid-century dancehall, reborn

CAPACITY	SIZE	LOCATION
1,000	582 sq.m	Mayes Street Manchester M60 4ES
ARCHITECTURAL & INTERIOR INFLUENCE	KEY FEATURES	PERFECT FOR
Mid-Century Lighting Installation Original Wood Features	City Centre Location, Built-In Stage, Sprung Maple Floor, Built-In Bar, Fully DDA Compliant, In House Production, Incredible Technical Spec, Fully Furnished Dressing Rooms & Production Offices, Exclusive Hire Available, Pillar Free, Excellent Acoustics, Kitchen, Light Installation, Unique Vintage Wood Wall Panelling, Excellent Transport Links	Award Ceremonies, Dinners, Receptions, Charity Events, Product Launches, Christmas Parties, Summer Parties, Fashion Shows, Conferences, Exhibitions, Weddings, Photoshoots, Filming, Live Music





About

The jewel in the crown of Manchester's fastest moving city- centre district, New Century Hall is an iconic part of the city's musical history.

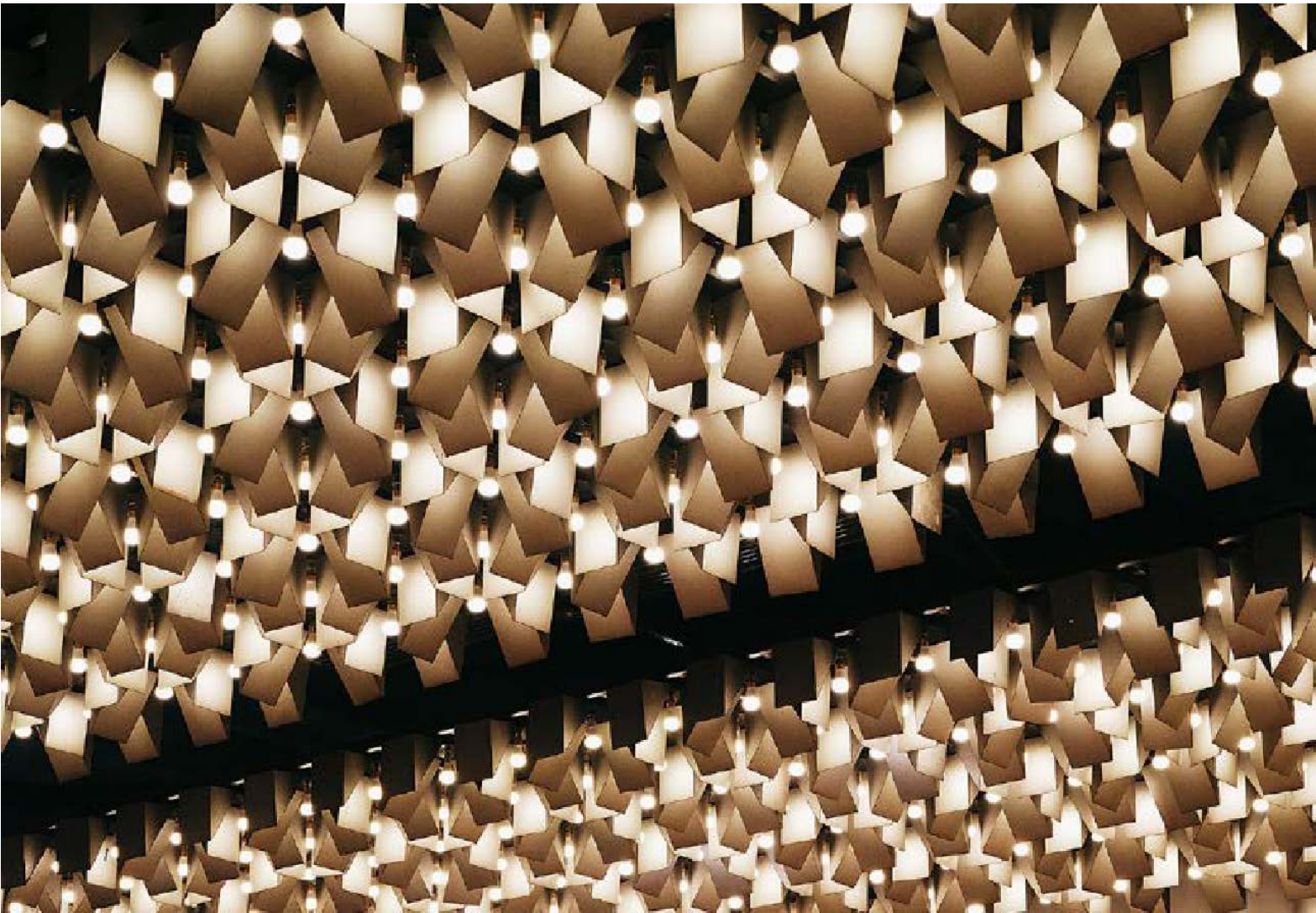
The main space houses an exquisitely restored open-plan events hall for up to 800 people. It shares its building with New Century Kitchen, which brings the best of Manchester's food and drink scene to NOMA.

The hall is the heart of New Century House, considered one of the finest modernist towers in the United Kingdom.

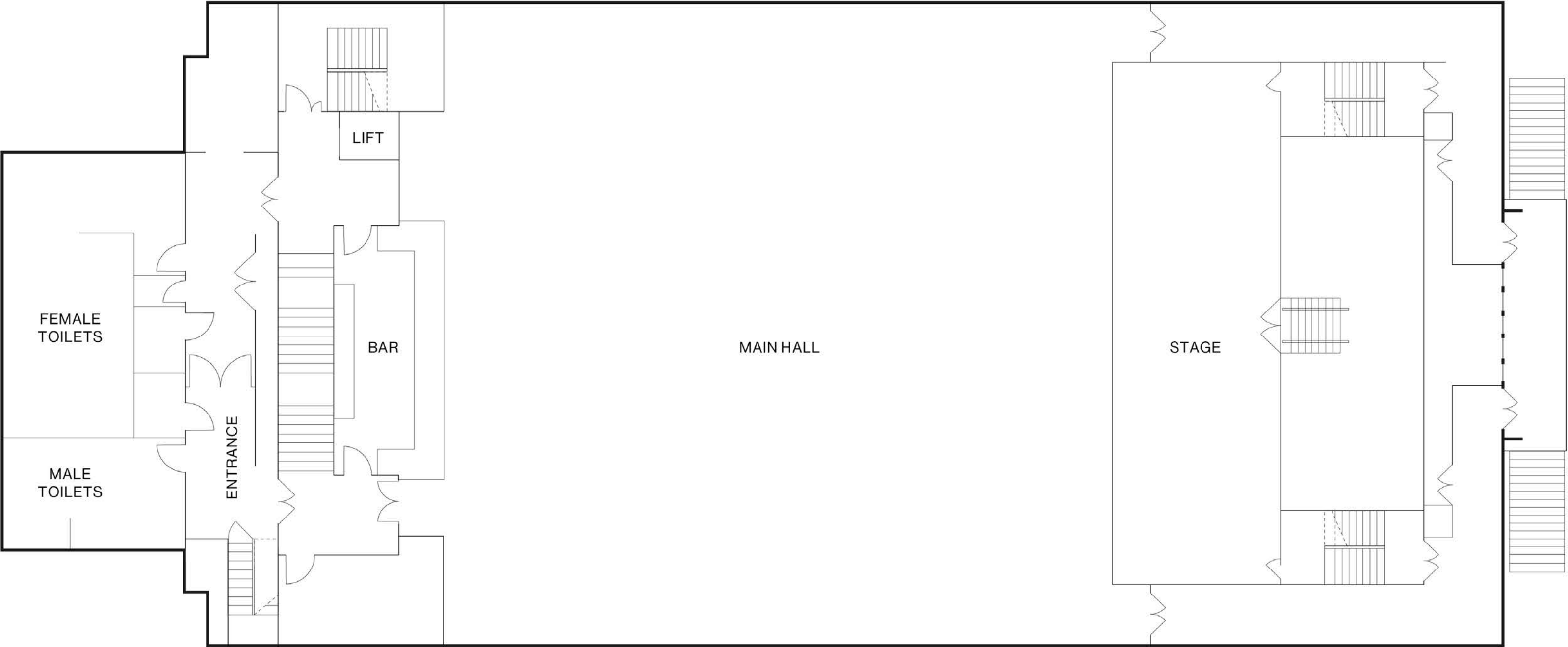
The venue retains its unique mid-century character, with an original sprung maple dancefloor and distinctive wooden panelling. A newly installed 'disco ceiling' lighting installation creates an immersive and responsive technicolour environment for all moods.

New Century Hall was a legendary dancehall in the 1960s, hosting acts including Jimi Hendrix, The Rolling Stones, The Bee Gees and Tina Turner. In the 1980s, New Century Hall was adopted by the Madchester scene, fostering such homegrown talent as The Stone Roses and Happy Mondays.

The venue builds on its musical legacy for a new generation, with a flexible layout and state-of-the-art sound and lighting facilities.



New Century Floorplan



SPACE	SIZE	CAPACITY
Main Hall	582 sq.m	1,000
L (M)	W (M)	H (M)
23.8	22.2	6.3
DINNER	THEATRE	CABARET
300	500	200



Spaces

Main Hall

The main space of the venue is the historic New Century Hall. With original mid-century features including a sprung maple dancefloor and wooden panelling, the space has been meticulously restored for a new generation. Alongside state-of-the-art production facilities, bathrooms and kitchens, a technicolour lighting installation spans the dancefloor, creating the opportunity for a variety of moods.



Production Overview

1. Technical Equipment

Boasts an L'Acoustics sound system plus state of the art lighting.

2. The Stage

18m wide x 6m deep, will handle any touring production needs.

3. The Load In

25m private loading and parking bay in Miller Street, adjacent to exterior goods lift access directly to the hall.

Neighbourhood

New Century Hall is located in the centre of Manchester, a stone's throw from Victoria station in the bustling NOMA district. Located opposite Victoria station, New Century Hall celebrates the rich cultural legacy of Manchester.

The bustling NOMA district takes its name from the contraction of North and Manchester, indicating its location in the long overlooked north side of the City Centre.

Other buildings of architectural significance on the 20-acre site include the Edwardian Hanover Building and One Angel Square, which was named the 'most sustainable building in the world' upon its opening in 2013.

A short walk from the shops and bars of the historic Royal Exchange, cultural highlights include Manchester Art Gallery, the Whitworth and Angel Meadow Park.

The venue benefits from excellent transport links and is easily accessible by car, train, tram, bus and plane.





Location

Address

Mayes St, Manchester M60 4ES

Transport Options

Tram stops within five minutes walk Shudehill Interchange, Market Street, Exchange Square

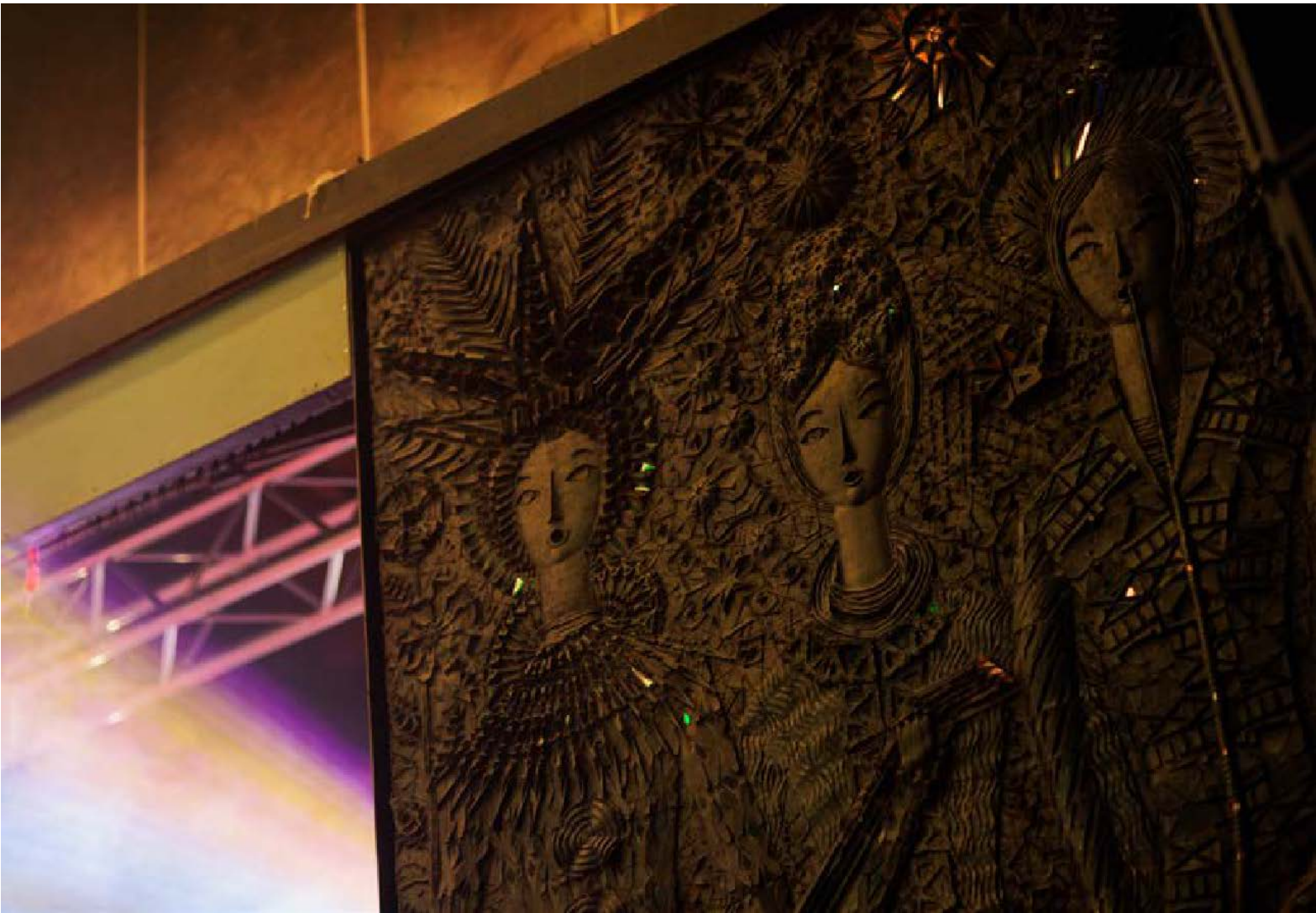
Rail - Opposite Victoria station and 15 minute walk from Manchester Piccadilly with 3 London trains per hour

Car - On the inner city ring road, the neighbourhood offers 3,000 multi story and surface level car parks within 5 minutes walk

Cycle - Extensive onsite cycle facilities

Additional Details

Iconic Grade II listed building, independent street food kitchen, 800 capacity live events venue and thriving creative college over 3 floors.



Created by Spaces & Stories

CONTACT US

Tel. +44 (0) 161 806 0161 | newcentury@spacesandstories.com
spacesstories.com/space/new-century